

Historic, archived document

Do not assume content reflects current scientific knowledge, policies, or practices.

Descriptive Catalogue

of the

Comal Springs Nursery,

OTTO LOCKE, Proprietor.

Nursery located one mile west of New Braunfels.



SEASON OF 1897 - 1898.

Deutsche Kunden können in deutscher Sprache correspondiren.

Address all Letters to

Otto Locke,

New Braunfels, Comal County, Texas.

CATALOGUES MAILED FREE.

Hoffmann, Printer, New Braunfels, Tex.

Please do not fail to read all below.

Terms, Conditions, Shipping Etc.

CASH (by Draft, Money Order or Registered Letter) WITH ORDER will secure prompt filling. No goods shipped unless CASH or SATISFACTORY SECURITY accompanies the order.

Goods will not be shipped C. O. D.

Orders for less than \$2 will not be filled unless 25 cents are allowed to pay the cost of packing.

At prices named, goods are carefully packed in moss or straw, well bailed or boxed and delivered to forwarders here, after which my responsibility ceases, except for mistakes in filling, which must be reported within five days after receipt of goods, to admit adjustment. Be careful in unpacking to note everything, and immediately "heat in" in moist soil till planted, or plant at once, never allow the roots to dry, or failure will most likely result.

It is always better to ship by Express, unless the amount of stock is large. If money is sent to prepay express freight, I can save customers money by prepay as I get special rates. No prepayment is made when money is sent. This is an accommodation I

fully do my customers, but I cannot prepay out of my own pocket, trusting everyone to return my money. Good customers never ask it. In case a surplus of money is sent, it is promptly returned with statement.

Give explicit Directions for Shipment.

When such are not given I shall use my best judgement in selecting a route, but will not be responsible for loss thereby.

Customers will generally be most successful in getting desirable assortments by leaving the selection in part, at least, to me, as I have much experience in testing and growing for market, but I desire everyone to have his or her choice as near as possible.

It is to my own interest to give customers the best terms and selections possible. But I cannot prevent Drouth, Severe Winter, Early or Late Frosts, Insects, Rabbits etc. from eating, nor Plants from dying by Bad Treatment in Other Hands, hence I never insure trees to

live after leaving my possession, but do deliver good stock, in good order, true to name. In case I fail in these I replace or refund money.

I am responsible to all my customers, not to them only; for the character of the goods and to the same or their forwarders, the express or railway companies. I guarantee to deliver stock in good order and TRUE NAME, with such delivery my responsibility ceases.

Should any Trees, Plants or Seed be desired not mentioned in this catalogue, I will be glad to furnish same at the lowest prices. As I am transacting business with the largest nursery florists and seedhouses, I am in a position to furnish them at reduced prices.

WHOLESALE.

Nurserymen and large planters, who need Trees, Plants and Roses in large quantities should write for my wholesale List. I can furnish extra good nursery stock, Freight Prepared to any depot in Texas, cheaper than others.

KEEP IN MIND.

That I will give a large discount for large orders for Churches, Schools and Graveyards, for prices.

CAUTION.

I employ no living agents. Those claiming to be my agents' agents and should be shunned.

I have no "Tree of Grape," Blackberries, Raspberries, Currents, Goose, Tomatoes, Strawberries," no "Neverfalling and Trees," nor any other impossible horticultural wonders, such as, "whole-root grafted" which are only the poorest piece grafted all. It is the province of the *Traveling Peddler* to supply these rare novelties. I claim exclusive right to such trade, and I only grant their claims.

I pay no transportation charges on trees and plants, but always add some articles to pay cover them.

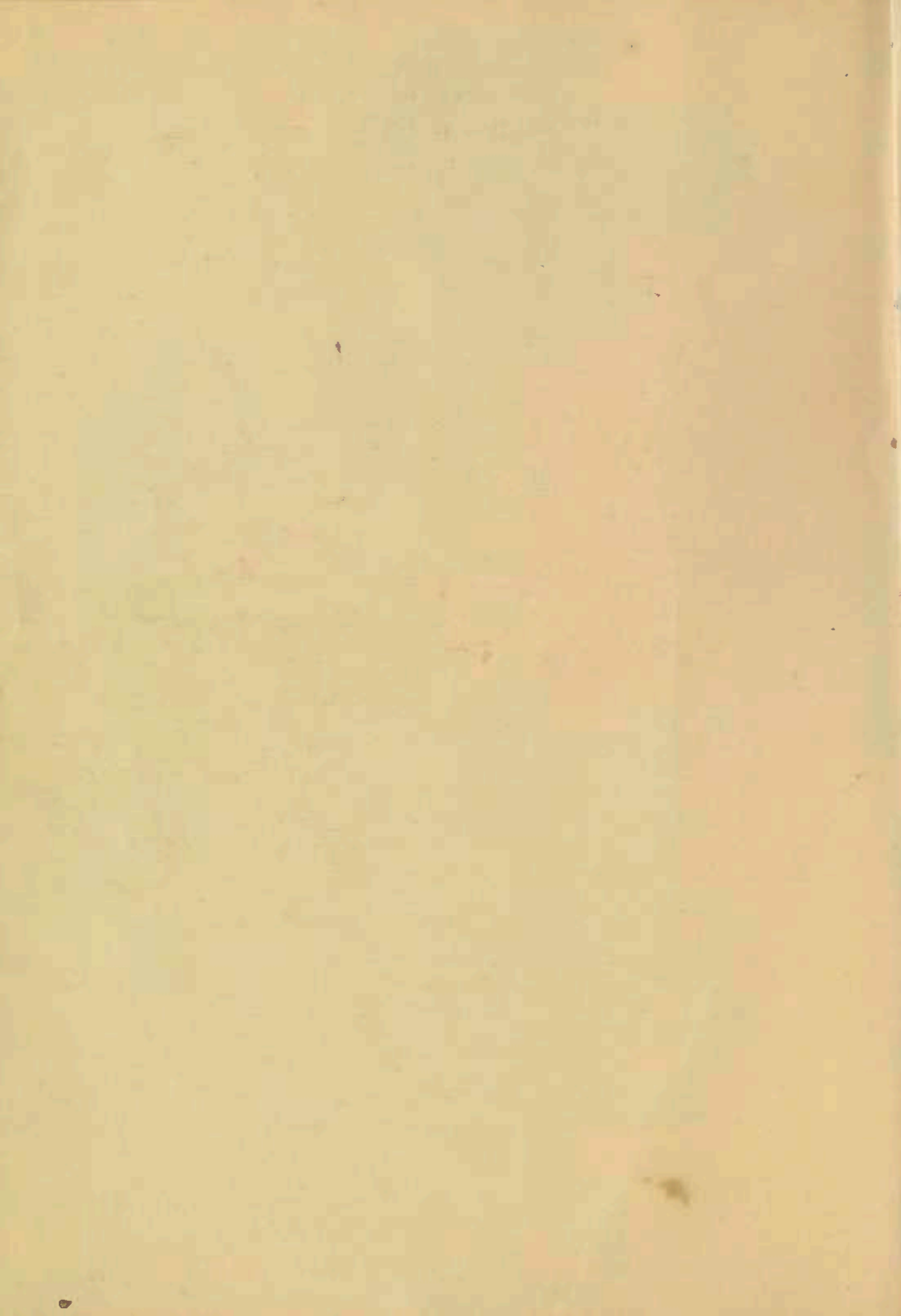
Address: **OTTO LOCKE, Nurseryman**
New Braunfels, Texas

Errata: Page 13, Eriantus Ravenna, should be 25 cts. instead of 15 ct



SUMMER BEAUTY

Raised in 1873 by Otto Locke, New Braunfels, Tex., who introduced it in 1893. The trees have not failed to produce heavy crops every year since. It is a vigorous grower and late bloomer, so that spring frost will not injure it. The fruit is very large and handsome; flavor sweet, sugary, rich, aromatic and pleasant, excellent quality; always grown in cluster of from three to five. One of the rarest and most productive pears in cultivation. Ripening the end of July.



— SOMETHING NEW. —



© — BISMARCK

The Most Wonderful Apple of the Age.

The Youngest Bearer Ever Known.

Bears at Two Years—Never Fails.

A FINE WINTER APPLE. HARDY AS AN OAK.
SUITABLE FOR ALL LATITUDES.

Wheeler & Co.
New York

(OVER)

. . . The Bismarck Apple. . . .

Read the following reliable evidence of its value :

THIS fine *new apple* comes from New Zealand, and it is creating greater interest among apple growers than any other variety. Not only here, but all over Europe. It is a fruit of large size, specimens having been grown, it is claimed, of nearly two pounds each. Color, a deep orange yellow, shading to a bronzy red, and very attractive. Flesh yellow, tender and juicy, and of good quality. Keeps all winter. It has been fully tested in Russia, Germany, France, England, United States and Canada, and wherever grown has proved a most astonishing revelation in hardiness and early fruiting.

The following from the *London Gardener's Chronicle* of October 18, 1895, shows its productiveness:

"Now we have to speak of another apple called "Bismarck." It furnishes an instance of precocious heavy bearing that we do not remember to have seen equaled. Eighteen rods and a half were covered with Bismarck trees of two years old upon the Doucin stock. Many of these had eleven, a few twelve, large fruits upon them, and some had none. The trees are planted in nursery rows about three feet apart, and the plants about a foot asunder. An acre of trees cropped in such a manner would yield about five hundred bushels of fruit per acre. This is a wonderful showing for a *new fruit*, which is destined to become a universal favorite."

What the *Gardner's Chronicle* says of its productiveness, is confirmed by experience in this country, as on a transplanted two-year Standard tree was counted *twenty-six* handsome apples, showing what a wonder it is.





Apples.

Prices: strong, 4 to 6 feet trees, grafted on whole roots, 15 cents; \$10 per 100.

- Striped June.** (Red Margaret,) medium to large size, yellow, striped with dark red, juicy, subacid, valuable. May.
- Red June,** medium to large, oblong, dark red, crisp, sometimes almost mealy tender, high flavored. Ripe June 5, and sometimes until July.
- Red Astrachan,** large size, crimson and yellow, juicy, crisp, valuable for cooking. Tree a fine grower and very prolific. June 1 to July 15.
- Yellow Transparent,** Russian variety, medium, pale yellow, early.
- Early Harvest,** large, yellow, tender, juicy, and of excellent quality. July 1.
- Yellow Horse,** known throughout the South as the best all-purpose summer apple, large, yellow, sometimes with red blush, firm, splendid for cooking, eating and drying. July 15.
- Fall Queen,** tree upright, spreading and long-lived, fruit large, yellow, with bright, red cheeks, very rich and juicy. Sept. and Oct.
- Lady Finger,** large, oblong, greenish yellow, covered with deep carmine, tender and juicy.
- Rome Beauty,** vigorous, profuse, striped, large, good market.
- Kinnaird's Choice,** fruit medium, mostly covered with a dark red; flesh yellow, tender, juicy and very aromatic. Very hardy and productive.
- Winesap,** tree a strong grower and productive, fruit of medium size, red flesh, crisp, juicy, high flavored, valuable for table, market and cider. Ripe in Oct.
- Black Twig,** tree upright grower, fruit like Winesap but one fourth larger.
- Ben Davis,** every one has seen this apple, as it is sold by grocers in fall and winter; large, red and yellow striped, subacid, valuable. October.
- Springdale,** a new seedling. Took first premium at Ark. State Fair. Our best keeper and will sell, when known, above all others. Fine grower, absolutely ironclad, heavy bearer. Fine deep red color, excellent quality, and a splendid keeper, Price 25 cts. each.
- Herschel Cox,** a new winter apple from Tenn. Fruit and tree resemble Ben Davis but fruit smaller, better quality and better keeper. Price 25 cts.
- Bismark,** this most valuable new apple, introduced from New Zealand, promises to take the place of almost every other apple grown in this country. Wherever grown it has proved a most astonishing revelation, not only in high quality, but also in hardiness and especially in earliness of fruiting; it is just the apple for a hot climate. The color of the fruit is a beautiful golden yellow and its size is of the largest, of most delicious flavor. One and two year old trees bear heavy crops of large fruits. Price 50 cts each.

FIVE TEXAS APPLES.

Gray, from San Saba County. Growing besides other apples, it has been watched and compared with them, and its many merits make it sought and demanded by all who have seen it. Price 35 cts.

Lincoln, Mr. Onderdonkes favorite; he says of it: "Large and flattish, while growing resembles Rhode Island Greening, but takes a dull red blush just before ripening. Our best apple." August. 35 cts.

Rutledge, one of a number of apple trees planted in Williamson county thirty five years ago by Capt. W. P. Rutledge. It is considered one of the largest apple trees in the State, measuring over 50 feet across the top. Bears a fair crop of medium sized fruit almost every year; very promising. Fall. 35 cts.

Talbot, the Apple for this Section, originated in Williamson county, grows anywhere; strong,

vigorous growing tree, our burning sun seems to have no injurious effect upon it, as the branches do not lean to the north when young, like those of most other varieties. Trees made double the growth of any other in young orchards; they do not overcrop, but bear regularly. Fruit medium to large, greenish yellow, nearly overspread with red, flesh rich, cream color, of fine texture, firm, very juicy and deliciously flavored. Ripens in Sept. and keeps until January. 35 cts.

Heine, originated in Burnet county. Tree a good grower and regular bearer. Fruit large to very large, oblong, depressed at one end, beautiful yellow with slight blush where exposed to the sun, flesh firm, white of an excellent quality. Ripens in September and keeps till January. 35 cts.

One tree each of the five Texas apples, for \$1.50.

Crab Apples.

These pretty little apples do well on almost any kind of land. Often we have seen them growing to perfection when other apples failed entirely. Price: 15 cents each.

Hyslop, vigorous, prolific, crimson, large ornamental, preserve.

Transcendant, (Siberian,) an attractive yellow color, splashed and striped with red; bears very young and annual crops thereafter. We

value it highly for preserves. Buds and blossoms exquisitely beautiful. Ripens in July.

Yates, bright red covered with white specks; quality fine, very productive, long keeper. This is one of the best apples known.

Pears.

*In order of ripening. 25 cents each; \$2.25 per 12; \$15 per 100.
Extra large, 6 to 7 feet, 50 cents each.*



Wilder Early, (new,) vigorous and hardy, extra early, no rotting at the core, superior quality, melting, rich and pleasant.

Koonce, (new) very early, of the very best quality, do not rot at the core. The

fruit is of a straw color with red cheek and brown dots. Tree of vigorous growth, healthy, and is very hardy in bud and bloom, so that late frosts will not kill the blossoms, 35 cents each.

Clapp's Favorite, on pear or quince, prolific, red cheek, large, excellent, table.

Reliance, (new,) medium size, brown red with russet, flesh fine grained, juicy, melting, high flavored; quality very good to best; tree vigorous and a regular and abundant bearer. 35 cts,

Summer Beauty, raised in 1873 and introduced in 1893 by us. This pear is the finest fruit and the surest bearer of all varieties that ever have been tested so far south. The trees

have not failed to produce heavy crops every year since 1880. It is a vigorous, symmetrical grower and late bloomer, so that spring frosts will not injure it. The fruit is very large and handsome, yellow with a fine bright red cheek, flavor sweet, sugary, rich aromatic and pleasant, excellent quality; always grown in clusters of from three to five.

(One of the rarest and most productive pears in cultivation.) Ripening the end of July. Price of well rooted one year old trees, 2 to 3 feet, 50 cents. 4 to 6 feet, \$1.00 each.

The following are a few testimonials of the Summer Beauty from persons who have examined and tasted the pear.

Washington, D. C. August 14th, 1890.

Mr. Otto Locke, New Braunfels, Tex.

Dear Sir: The box of pears which you sent were duly received. If you can grow such Pears as this as far south as your location in Texas, that there is no need of growing the Le Conte, or of it ever being said that pears will not do well in your region. Very truly,

H. E. Van Deman, Pomologist.

U. S. DEPARTMENT OF AGRICULTURE,
DIVISION OF POMOLOGY.

Washington, D. C. August 13th, 1894.
Mr. Otto Locke, New Braunfels, Tex.

Dear Sir: Your specimens of Summer Beauty Pears and accompanying letter received, August 7, for which accept my thanks. I consider it a very valuable pear for your section of the country and perhaps might succeed equally well elsewhere. It is of fine flavor, sweet, sugary, rich, slightly granular and excepting a slight astringency which may result from the pears having been taken from the tree at too early a date, would rank very high amongst pears. It has colored up beautifully and should be a valuable market variety.

Yours truly, S. B. Heiges, Pomologist.

Little Silver, N. J., Aug. 15th, 1893.
Mr. Otto Locke, New Braunfels, Tex.

My dear Sir: The specimens of Summer Beauty pears which you sent on the 8th inst. have arrived in good condition, proving it to be a remarkably fine shipping variety. It is certainly a highly colored and attractive fruit and although a little astringent, I find it sweet and rich; the flesh of fine texture, thus placing it far above the average Southern Pears in point of quality. Its size too is good. Am quite sure it is distinct from anything before the public, and think the name given it an appropriate one.

Yours truly,
J. T. Lovett.

San Antonio, 2 August, 1893.

Werther Herr Locke! Meinen verbindlichsten Dank für die übersandte Kiste mit Obstproben, welche im besten Zustande zu Hand kam. Ich finde den Namen „Summer Beauty“ für die betreffende Birne nicht nur äußerst passend, sondern fand dieselbe auch so delicia, daß ich zum Herbst einige Bäume dieser Sorte zu haben wünsche. Wenn die Birnen in einem so ungünstigen und trockenen Jahre wie dieses, so schön und saftig werden, wie müssen sie dann erst in einem mehr geeigneten Achtungsvoll grüßend,

L. F. Lafrentz.

Wellville Wochenblatt, 10ten Aug. 1893.

Wir sind Herrn D. Locke verpflichtet für Zusendung eines Kistchens mit Birnen von einer Sorte, die er sehr passend „Summer Beauty“ getauft hat. Dieselben haben den Namen nicht nur durch ihre hübsche Form und prächtige rothe Färbung, sondern auch durch Aroma und Wohlgeschmack.

W. A. Trendmar.

Flemish Beauty, large, beautiful, juicy, melting, rich and firm, does well here.

Bartlett, on pear or quince, prolific, yellow, large, fine, table, market.

Howell, large, waxen, yellow with red cheeks,

rich, buttery, sweet and perfumed, strong grower, productive and valuable.

Smith's Hybrid, (new,) trees resemble Le Conte, fruit earlier, larger, richer and more melting, one of the best new pears.

Le Conte, on own roots, prolific, yellow, very large, good table or market.

Jefferson, above medium, shape pyriform, color yellow with deep crimson cheeks, good market pear.

Lawson, one of the most beautiful when fully ripe a brilliant crimson, on a clear yellow ground; flesh is rich, juicy and pleasant.

Seckel, on pear, prolific, brown, small, best, table.

Duchess, pale yellow, very large, good market.

Buffum, medium size, yellow, somewhat covered with reddish brown and russet, buttery, sweet and excellent.

Idaho, (new) very large, flesh white, tender, sweet and buttery, with a richer and finer flavor than the Bartlett, ripe late.

Vicar of Winkfield, tree a vigorous grower, fruit large, pale yellow, red cheek, good flavor.

Kieffer Hybrid, very vigorous, prolific, yellow, large, excellent, good table and canning.

Garber Hybrid, (new) oriental strain, like the Smith's, fruit resembles the Kieffer in size, shape and color, ripe three weeks later.

Lincoln Coreless, almost without core or seed, unusually large, rich golden color when ripe, excellent quality, keeps perfectly sound until March. 35 cts.

Winter Nelis, medium, buttery, good flavor, slender, straggling grower.

Beurre Eastern, large, melting, very good, ripens in Nov. and can be kept until spring.

Hawaii, medium round, bergamot shape, very prolific; foliage luxuriant, fine tree. 35 cts.

Mme. Von Seibold, large, round, russet, similar in shape to the China Sand Pear. Flesh brittle, juicy, with a peculiar spicy aroma. Prolific and good grower. 35 cts.

Golden Russet, Japan, the fruit is flat or apple shape of good size and golden russet color; the tree is a quick grower and sure bearer. 35 cts.

Hubbard, Japan pear, vigorous in growth and adapted well to our climate. 35 cts.

Japan Wonder, another Japan pear of great merit; the tree is of vigorous and luxuriant growth, well worth planting. 35 cts. each.

Quinces.

Need very rich, deep, well drained Soil. 25 cents each; \$2.50 per 12.

Orange, old standard variety.

Champion, (new) very fine, large.

Meeche's, (new) very fine and prolific.

4. Do you need Shade Trees? We have them. Order a dozen, or a thousand.

Almonds.

25 cents each. Almonds do well wherever the Apricot thrives. They succeed in Western Texas.

Languedoc, Princess and Sultana are the three best varieties.

Apricots.

In order of ripening. 25 cents each; \$2.25 per 12.

Myer's Early, earliest; medium size, of white color, good, prolific.

Eureka, very early, large, fine, prolific.

Blendheim, Russian, large, golden yellow, with a red cheek, good quality, bears well.

Moorpark, large, excellent; an old favorite.

Chinese, the largest of all apricots.

JAPAN APRICOT, Bungoume, this is remarkable for size, fine quality and vigorous tree. 35 cts.

Cluster, original tree has never failed to bear since it was 3 years old; of beautiful, symmetrical growth, very vigorous and hardy; an enormous bearer. Fruit medium, transparent yellow, excellent quality.

Nectarines.

25 cents each, unless otherwise noted.

Jumbo, originated in Burnet Co. from a peach seed. Fruit said to be as large as a Chinese cling peach; rich yellow; delicious flavor; sure bearer. 50 cents each.

Boston, large, deep yellow, with a bright blush

and mottling of red; sweet and a peculiar pleasant flavor. Freestone.

Coosa, very large, red, flesh white; a nep seedling from upper Georgia.

Victoria, medium, purple, brown cheek. July.

Cherries.

25 cents each.

Early Richmond, an old reliable variety.

English Morello, similar to Early Richmond, later.

May Duke, very fine, heart shaped, nearly black, tender rich and juicy.

Esel Kirsche, a German variety. Size medium, color bright red, mild acid flavor, good

grower.

Governor Wood, large, heart shaped, light yellow shaded with red, juicy and sweet. May.

Black Tartarian, very large, purplish black, half tender, flavor mild and pleasant. Tree remarkably vigorous, erect, beautiful grower and very popular. May and June.

Peaches.

In order of ripening, 4 to 6 feet, 15 cents each; \$10 per 100.

I. RIPENING HERE FROM MAY 20TH TO JUNE 10.

Sneed, (new,) ripe 10 days before Alexander, of Chinese type. Tree of vigorous growth and drooping habit. The earliest peach in cultivation.

Triumph, (new.) "The earliest yellow peach in the world." A perfect yellow freestone, of excellent quality. Ripens with Alexander. A good keeper, very prolific. Two year old trees bore one half bushel each. 25 cts each.

Greensboro, (new,) earlier and larger than Alexander, fine flavor, and attractive appearance. Mr. J. Van Lindley says the Triumph is a great improvement over the Alexander but that the greater size and beauty of the

Greensboro will make it a leading as well as a great market peach. 25 cents each.

Dwarf Japan Blood, early, abundant, early bearer, red, good, new.

Alexander, good quality, high color, flesh greenish white.

Arkansas Traveler, better than Alexander.

Jessie Kerr, originated from seed of Hales, Early; about the size and season with Alexander, bears well.

Love All, large, globular, dark red cheek, very juicy and sweet, ripe with Alexander.

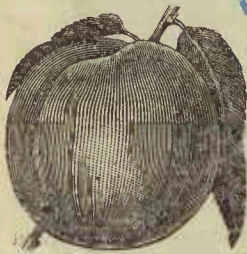
Bokara, (new,) the hardiest peach known. It is of fine quality and a good bearer. 25 cts.

Honey, medium size, oblong, pointed, very sweet, bears well, an early bloomer.

II. RIPENING FROM JUNE 5TH TO 20TH.

Red River, original in Denison, Texas, large, good, white, prolific.

Southern Early, (new,) this is the largest of all



Buy your trees direct from the Nursery and you will get what you want. 5.

- early peaches, good quality, very prolific. 25 cts. each.
- Pearson**, similar to Mamie Rose, but as large as Chinese Cling. A perfect freestone, ripe before Mamie Rose. It is a hardy, prolific and very valuable new peach. 25 cts. each.
- June Rose**, large red cheek, white flesh, one of the best early varieties.
- Mamie Rose**, a seedling of Chinese Cling. Fruit very large, white, nearly covered with delicate carmine; flesh white, juicy and of good quality, a regular and very prolific bearer.
- Rogers**, extra large, red cheek, juicy, aromatic, sure, prolific. A seedling of Chinese Cling and one of our best peaches.
- Yellow Mystery**, (new,) yellow freestone, early, good.
- Ameliaberta**, (new,) a cross between Amelia and Elberta, as large as Elberta, higher color, and ripens with Amelia, freestone. 25 cts.
- Aurora**, very large, globular, red cheek to the sunny side, juicy and of good flavor, bears well. A fine new peach, freestone. 25 cts.
- Cleveland Free**, a seedling of Thurber. Fruit large, creamy white, red cheek, juicy, rich and excellent.
- III. RIPENING JUNE 20TH TO JULY 15TH.
- Mountain Rose**, large, round, white flesh, red cheek, free.
- Beauty Blush**, new, fruit uniformly large, high color; splendid for market, freestone. 25 cts.
- Pallas**, large, flesh white, melting, with a rich vinous aroma, profuse annual bearer.
- Gen. Taylor**, large, white flesh, red cheek, cling, productive.
- Gen. R. E. Lee**, cling, similar to Chinese Cling but earlier and more prolific.
- Barnard**, large, yellow, red cheek, very productive, freestone.
- Crosby**, medium, fine rich yellow color with streaks and shades of carmine.
- Comal Cling**, (new,) the best, largest and finest yellow clingstone. The original tree was found growing behind an old house by one of my neighbors ten years ago. Fruit very large, dark yellow, with dark red cheeks to the sunny side, flesh yellow, juicy and sweet. Trees growing to a large size. Leaves very large. A regular bearer. 25 cts.
- IV. RIPENING JULY 15TH TO AUGUST 10TH.
- Carpenters Cling**, large white, with a tinge of red, sweet, juicy, very productive.
- Old Mixon Free**, large, white flesh, red cheeks, fine, prolific.
- Elberta**, very large, yellow, red cheek, free, firm, sure, prolific. Best of all.
- Pratt**, very sweet, yellow, red cheek, large. A fine good peach.
- Old Mixon Cling**, large, white flesh, red cheeks, prolific.
- Chilow**, a large yellow peach like Elberta, but a clingstone. Originated near Austin. A good bearer and shipper; new. 25 cts. each.
- Thurber**, very large, white flesh, red cheek, sure productive.
- Dr. Berckmans**, (new,) a seedling of Chinese Cling. Size large, creamy white, with blush cheek; flesh white, red to the stone; melting, juicy, vinous and of highest flavor, freestone. 50 cts. each.
- Lemon Cling**, large, yellow, sure, a fine peach.
- Wilkins Cling**, large, white, red cheek, good quality, productive, clingstone.
- V. RIPENING FROM AUG. 10TH TO SEPT. 1ST.
- Indian Free**, large, globular, red, melting, rich, sure productive, a good late peach. 25 cts.
- Ward's Late**, large, globular, white, red cheek, very good, prolific.
- Heath Cling**, very productive. One of the best clingstones.
- Admirable Free**, large, golden yellow, with dark red cheek, juicy and aromatic; a fine peach, bears well. 25 cts.
- VI. RIPENING SEPT. 1ST TO OCT. 1ST.
- Lemon Free**, light yellow flesh, melting, a large late peach; prolific.
- Caruth**, yellow freestone, very prolific, hardy and good quality.
- VII. RIPENING INTO OCTOBER.
- October Indian**, medium, red, hardy, prolific.
- Henrietta**, very large, yellow, crimson cheek, sure, the best late clingstone.
- Wonderful**, a remarkable fine yellow freestone.
- November**, this is the latest of all peaches, ripe in Nov., good freestone. 25 cts.
- TRUE HONEY SEEDLINGS**. Those who want peaches every year and lots of them, ought to plant the True Honey Seedling. 10 cents each; \$1 per dozen.
- SEEDLING PEACHES**, extra strong and fine, two years, 5 to 7 feet, 5 cts. each: one year old trees, 3 cts. each; \$2.50 per 100.

Plums.

In order of ripening. 4 to 6 feet, 20 cents each; \$2.25 per 12; \$18 per 100.

- Emerson**, Chickasaw, good grower, red, large, good quality, heavy earer.
- Prunus Pissardii**, Myrobalan, ornamental, always purple, small, good.
- Willard**, Japan, medium, red, one of the earliest.
- Yellow Nagate**, Japanese, very large and early, golden yellow, sweet and juicy, fair quality, prolific.

6. The best Plum is Wickson; the best Dewberry, Mayes. They never fail.

✓ **Mc. Cartney**, new, of Texas, larger than Wild Goose, 10 days earlier, egg-shaped, golden yellow color, enormous bearer. This is the best yellow plum. 50 cts.

✓ **Mrs. Clifford**, (new,) larger than Wild Goose. pear-shaped, red, meaty, with a fine pine-apple flavor. 35 cts. each.

✓ **Wild Goose**, Chickasaw, vigorous, red, large very good, abundant when fertilized.

✓ **Marianna**, like Decaradeuc, vigorous, red, medium, good bearer, very fine for shade tree. 10 cts. each; \$8 per 100; 6 to 7 feet, 25 cts.

✓ **Sweet Botan**, Japanese, vigorous, purple, large, prolific, one of the best.

✓ **Hattankin No. 1**, Japanese, early, yellow, delicious flavor, very large.

✓ **Everbearing Plum**, new, Chickasaw, medium, red, meaty, juicy; tree a strong grower. This plum produces ripe fruit for nearly three months, begin to ripe in June and keep on ripening to the end of August. 50 cts each.

✓ **Baily**, Japanese; new, very large, globular, cherry-red color, prolific bearer.

✓ **Normand's Japan**, Japanese; new, beautiful golden color, larger and better than Burbank, apple shape; ripe end of June.

✓ **Robinson**, Chickasaw, large, blood red, bears young, very prolific.

✓ **Burbank**, Japanese, seedling of Satsuma, better bearer and much finer fruit, extra large purple skin, one of the best.

✓ **Wickson**, new, Japanese, tree grows in vase form, sturdy and upright, very productive. The fruit is evenly distributed all over the tree, it changes to white when about half grown and remains so until a few days before ripening when it changes to a glowing carmine. Small stone, the flesh is of fine texture firm, sugary and delicious, and will keep two weeks after ripening. A fine rare plum. 50 cts.

✓ **Red Japan**, Japanese, large, red, good, prolific, enormous bearer.

✓ **Chabot**, Japanese, large, carmine red; flesh yellow and solid, very productive.

✓ **Satsuma**, Japanese, largest size, dark blood red flesh, prolific.

✓ **Kelsey's Japan**, vigorous, greenish yellow, very large, excellent, prolific.

✓ **Wayland**, Golden Beauty type, vigorous, crimson, medium, good, firm, very prolific, best late plum in cultivation.

NEW PLUMS.

Price, 50 cents each; \$5 per 12.

✓ **White Kelsey**, this is a duplicate in size and shape of the common Kelsey, except it is of a pale, creamy color, almost white when ripe: does not rot before maturity like the Kelsey, and much earlier to ripen and later to bloom. Fruit of delicious flavor.

✓ **Yedo**, much like the White Kelsey, which it resembles in some respect, but it is of a deeper yellow color and ten days later to ripen, and a very attractive, fine flavored plum.

✓ **Mikado**, a very large plum, of greenish yellow color, nearly round, very little sature, a rapid grower, more so than any other. This is the most remarkable of all plums for its enormous size, beauty and good quality; It is probably the largest plum in existence; ripens fifteen days after Yedo.

The following eleven varieties were lately imported from Japan and were highly recommended from a reliable source.

✓ **Unknown**, came without a label.

✓ **O-Hatankyo**, said to be early.

✓ **Yone Momo**.

✓ **Wasse Sumomo**, said to be very early.

✓ **Wasse Botankio**.

✓ **Nagate No Botankio**, early.

✓ **Sagetsuna**.

✓ **Hausmomo**.

✓ **Wassu**.

✓ **Hytan Kayo**.

✓ **Weeping Blood Plum**, this variety said to produce a blood red plum of good quality. The trees grow of a weeping habit like a Weeping Mulberry.

One tree each of these 14 varieties for \$6.00.

Blackberries.

In succession.

✓ **MAYES DEWBERRY**, (like cut,) new, very large, early, glossy black, highly flavored. It roots deep, is very prolific and never fails. Price, 50 cents per 12: \$3 per 100.

✓ **WHITE DEWBERRY**, ripe 14 days before Mayes, a good, sweet berry. 50 cents per 12,

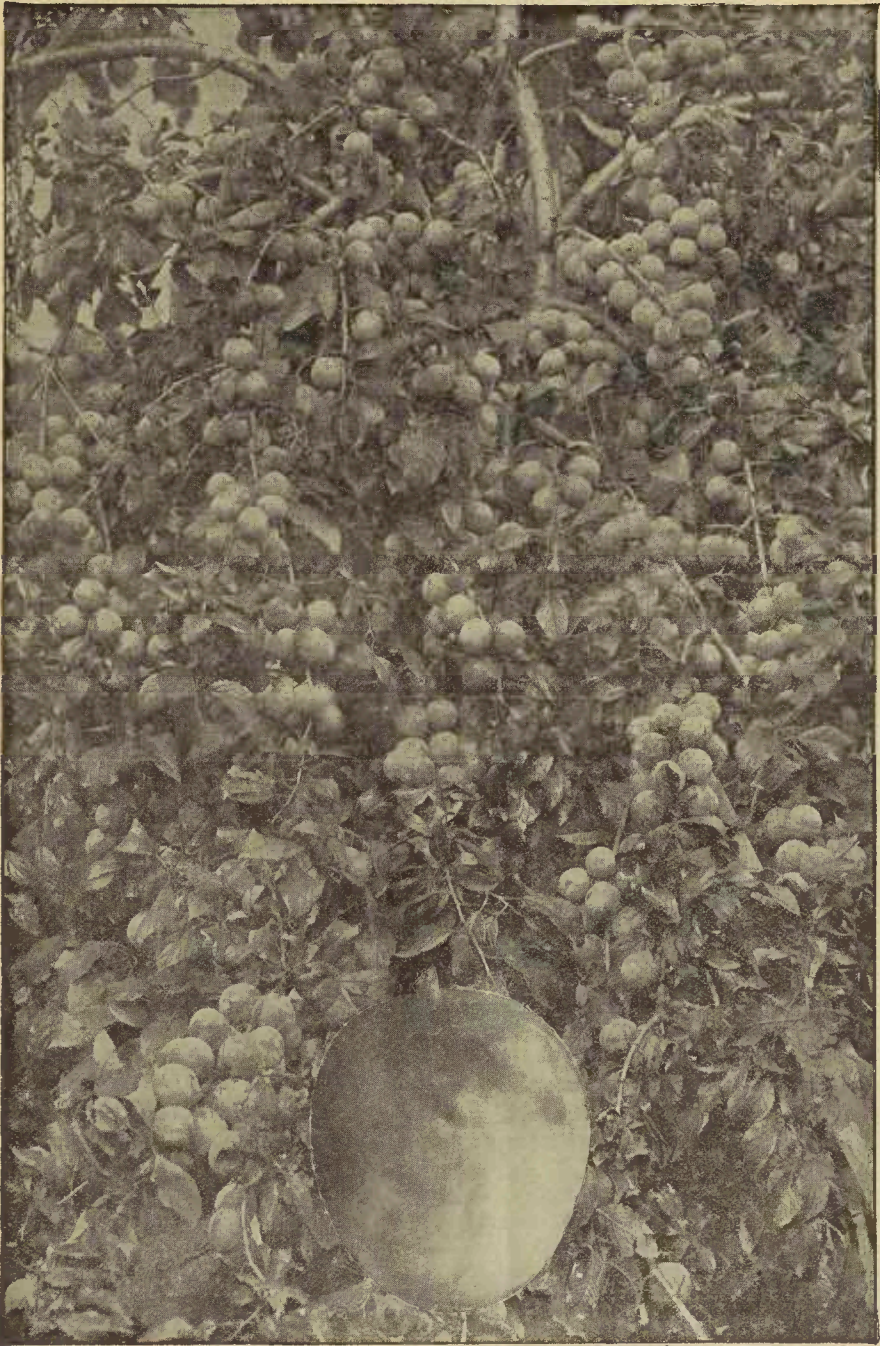
✓ **DALLAS**, very vigorous, drooping, thorny, productive, large, fine. 50 cents per 12; \$2.50 per 100; \$12 per 1000.



We have a large stock of Evergreens, varying from 8 inches to 5 feet in height; also Roses, Gladiolis, Cannas, and can furnish any named variety of Cacti at low Prices.

The Wickson

STANDS PRE-EMINENT AMONG THE MANY
THOUSANDS OF JAPAN PLUMS. ————



THE WICKSON PLUM.

A Grand Plum, both in Size and Quality. Immensely Productive.

THE WICKSON PLUM.

The earliest Bearer, most vigorous Grower, most free from Disease and Insects, most valuable Plum known for home use and the market.

Luther Burbank, the originator of the Burbank Plum, and the most noted authority on Plums, says of the Wickson: "**Among the many thousand Japanese Plums which I have fruited, this one stands pre-eminent in its rare combination of good qualities.** The tree grows in vase form, sturdy and upright, yet as gracefully branched as could be desired. From the time it is half grown, until a few days before ripening, the fruit is of pearly white color, which changes to a glowing carmine, with a heavy white bloom when ripe. The stone is small and the flesh of fine texture, firm, sugary and delicious, and will keep two weeks, or more after ripening; or can be picked when hard and white, and will color and ripen almost as well as if left on the tree. A year ago I was convinced that this was the best of all the Japan Plums, and have yet no reason to change that opinion, only more than ever to admire its growth, its productiveness, and the rare beauty and keeping qualities of its fruit, **and its size and quality.**"

From W. A. Taylor, Asst. Pomologist, Washington, D. C.: "Specimens of Wickson duly received. This is certainly a handsome Plum and of good quality also."

From S. D. Willard, Geneva, N. Y.: "Your new Plum, Wickson, received in good order as if fresh picked from the tree (shipped 1000 miles). I can say it is excellent, and would seem to be the best of its class."

From M. Crawford, Ohio: "The new Japan Seedling Plum you kindly sent me was received in perfect condition. It was tasted by several of us, and all pronounced it very delicious."

From Experiment Station, University of California: "Thanks for your letter and specimens. **The Plum is grand.**"

From Prof. L. H. Bailey, Ithaca, N. Y.: "These Japan Plums are certainly the coming fruit."

The Wickson stands at the head of the Plum family. It is proving remarkably successful the country over. No other Plum ever became so popular in so short a time. This is because it is practically curculio proof and free from black knot. It is proving a money maker in all sections.

Strawberries.

25 cents per 12; \$1 per 100; \$5 per 1000.



MICHEL'S EARLY, earliest of all; large, vigorous, perfect flower, a fine pollinator for other kinds.

CRESCENT, early, prolific, bright, excellent market, pistillate; needs Michel's Early to fertilize it.

CAPTAIN JACK, is used here as fertilizer of Crescent, and makes the best market companion for it. It is large, crimson, firm, good, very productive.

BUBACH MO. 5, new, large, handsome, productive, valuable, successful, pistillate.

PARKER EARLE, large, good quality but soft, needs high culture.

Raspberries.

50 cents per 12; \$3 per 100.



CUTHBERT, fruit red, large, of excellent quality; prolific, ripens May.

TURNER, hardy, early, strong growth, productive. Berries of good size, sweet and early.

GREGG, large, late black cap, very popular.

Mulberries.

6 to 8 feet, 25 cents; large, 50 cents each; unless otherwise noted.

HICK'S EVERBEARING, profuse three months, fine grower for shade, and the best of all trees for the fowl yard, and for shade.

WHITE HONEY, (new Russian,) delicate cream color, very sweet; trees do not freeze. 35 cts.

TRAVIS, everbearing, a magnificent tree, the original grows in Travis county, and has attained enormous size. Of uniform, rapid and

symmetrical growth, very handsome and ornamental, the compact head making a dense shade. Large delicious fruit, lasts about two months. 35 cts.

RUSSIAN, one of the hardiest and best for shade trees. Fruit small and will not drop from trees when ripe. Trees easy to transplant and quick growing. 4 to 6 feet, 20 cts. \$2 per 12.

Figs.

25 cents each.

BROWN TURKEY, medium, brown, very sweet and excellent; very prolific and hardy. The most reliable fig for open field culture.

CELESTIAL, small, pale violet, with bloom; very sweet, prolific and hardy.

Japan Persimmons.

This remarkable Fruit does well all through the South. 35 cents each.

Daidai Maru, round, red, tender, juicy.

Hachija, very large, oblong, vermilion, very fine.

Hyakume, very large, round, vermilion, delicious, late.

Kurokume, medium to large, flat at stem, fine.

Tani Nashi or Seedless, large, oblong, yellow,

fine for drying.

Yedoichi, large, round, flat at stem, vermilion, best quality.

Yemen, delicious when ripened in drawers or boxes covered tightly, tomato shape.

Zinji-Maru, medium, round, red, very fine, especially if frosted.

Pomegranates.

GLOSSY FOLIAGE, rich double flowers, followed by large showy fruit. They are very popular as ornaments. 15 cts.

SPANISH RUBY, the largest, finest and most prolific of fruiting varieties. Will succeed with

little winter protection anywhere in Texas. It is a fruit without disease, and deserves extensive cultivation. 50 cts each.

JAS. VICK, new, large and fine. 35 cts. each.

Grapes. Standard List.

In succession. Finest quality. This List contains the Best and Most Successful.

Champion, large, black, poor quality, market, vigorous, prolific. 5 cts.

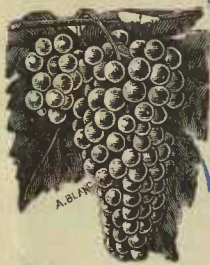
Moore's Early, very large black, good market. 6 cts.

Moore's Diamond, one of the finest American grapes; new. 10 cts.

Lutie, berries large, beautiful lilac color, of superior flavor and unusually free from rot;

a very desirable grape. 20 cts.

Delaware, small, very fine, table, market. 6 cts.



Ives Seedling, medium, black, fair market, wine sweet, free from disease. 5 cts.

Worden, very large, black, good market; improved Concord. 6c.

Niagara, large, white, very good table, market. 6 cts.

Martha, large, white, table, market. 6 cts.

Concord, large, black, table, market. 5 cts.

Jacquez, (Black Spanish; Le Noir; "Blue

French,") small, large cluster, black, red wine. 2 years, 15 cts. \$10 per 100.

Herbemont, (Mc Kee; Botisi: "Brown French") small, large cluster, purple, finest quality, table, wine, best old grape in Southwest Texas. 15 cts.

Brilliant, new, early and prolific; berries and cluster large and compact, translucent red, quality best for table and white wine; free from rot. One of the best grapes for west Texas. 25 cts.

Romel, new, free from disease, cluster and berries medium to large, yellowish white, skin thin, quality best; very hardy vine, one of the best white grapes for west Texas. 25 cts.

Shade and Ornamental Trees.

6 feet, 25 cents; 8 feet, 35 cents; 8 to 10 feet, 50 cents.

Your chief happiness lies in the growing ornaments surrounding your home. Such ornaments refine and purify. Neglect them not.

BOX ELDER, hardy, handsome, long-lived easily transplanted. 8 to 10 feet, 25 cts; \$2 per 12.

CATALPA, Tea's Hybrid, the finest in cultivation, very hardy. 8 to 10 feet, 25 cts; \$2 per 12: \$10 per 100.

COTTONWOOD, a delightful, quick growing shade tree.

LOMBARDY POPLAR, quick, ornamental, easy to transplant.

WEeping WILLOW, succeeds well on deep, rich soil. 25 cts.

UMBRELLA CHINA, a native of Harris Co., and now widely known over the State. It is the finest and quickest growing of all shade trees. I think I have the largest stock of

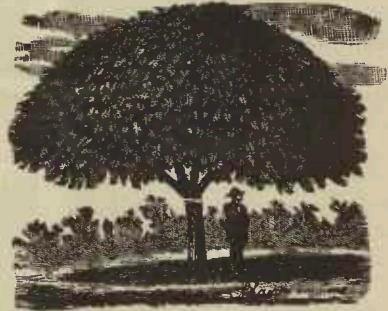
them in Texas. (See cut.)

7 to 8 feet, branched, extra large, 50 cts.

5 to 6 feet, not branched, 25 cts. each.

3 to 4 feet, not branched, 15 cts. each.

1 to 2 feet, 5 cts. each. \$2.50 per 100.



This cut represents the Umbrella China.

Shrubs.

All tested and successful in Texas.

CITRUS TRIFOLIATA, a dwarfish, handsome evergreen, blooming profusely all summer. Makes a lovely specimen alone, with bright, small oranges, not edible. 15 cts.

ALTHEA BANNER, double striped, white, pink and red. A very beautiful sort. 25 cts.

ALTHEA, double red, purple and white, splendid perpetual bloomers. 20 cts.

ALTHEA TOTUS ALBAS, single, pure pearly white; dwarf habit; earliest of all Althea's to bloom,

and blooms freely. Don't overlook this sort, because it is single - it is very desirable. 25 c.

GRAPE MYRTLE, crimson, pink and scarlet, fine strong bushes. 25 cts.

GRAPE MYRTLE, white, 35 cts.

DEUTZIA GRANATA, double pink, splendid shrub. 25 cts.

LILAC, large purple and white, well-known favorites. 25 cts.

SPIREA van HOUTTEI, large white flowers.

Broad-leaved Evergreens.

BUXUS ARBOREA, or English Tree Box, succeeds almost everywhere, it is of rather slow growth, compared with other evergreens, but remarkable for its longlivity, and finally gets to be 10 to 12 feet high. 35 cts.

BUXUS THIMIFOLIA, a small leaf dwarf box, very

choice. 35 cts.

The Buxus are one of the finest evergreens and stand the smoke and dust of large cities well. Give them a trial.

CAPE JASMIN, this lovely plant is too well known to need description. 1 to 2 feet, 25 c.

CALIFORNIA PRIVET, splendid for specimens, screens or hedging. 2 to 3 feet, 10 cts; for hedging, \$3 per 100. Have large stock.

LIGUSTRUM JAPONICUM, (Japan Privet,) this is the best of all privets, having dark green, pointed leaves, 2 by 2½ inches, fast growth; fine for hedges or single specimen. It produces large bunches of creamy white flowers, followed in autumn by purple berries. It is strictly evergreen. 25 cts.

EUONIMUS JAPONICUS, one of the fastest growing evergreen shrubs, suitable for either hedge or single specimen; can be greatly improved by cutting back to induce bushy form.

No evergreen has such a bright, dark green color in winter as this. For quick results this excels. Fine strong plants, 20 cts.

EUONIMUS JAPONICUS VARIGATA, this is the best variegated sort in existence, having a handsome, compact growth, foliage margined and splashed with silvery white. 20 cts; \$2 per 12.

EUONIMUS JAPONICUS FLAVESENS, this is the best tri-colored variety, green, yellow and silver. Other tri-colors are feeble in growth and do not stand the sun well. 20 cts; \$2 per 12.

MAGNOLI GRANDIFLORA, one of our grandest evergreens. 2 to 3 feet, 50 cts. each.

Cone-bearing Evergreens.

Golden Arbor Vitæ, this is the handsomest and most compact of the Arbor Vitæ, green with a beautiful golden tint. True grafted trees, 2 to 3 feet, 50 cts. 1 foot, 25 cts.

Compact Arbor Vitæ, a compact habit of the Golden, but a lively dark green color; some prefer this to the Golden. True grafted trees, 2 to 3 feet, 50 cts. 1 foot, 25 cts.

Pyramidal Arbor Vitæ, 3 to 4 feet, 35 cts. 1 to 2 feet, 15 cts.

Chinese Arbor Vitæ, dark green, vigorous, hardy, desirable. 2 to 3 feet, 25 cts. 1 to 2 feet, 15 cts each.

Rosedale Arbor Vitæ, very compact growth, with the sugar-loaf form of the Golden Arbor Vitæ, but with fine cedar like foliage of a bluish cast. Makes a beautiful ornament; perfectly hardy and of vigorous growth. The most beautiful of all Arbor Vitæ. 2 feet, 50 cts. 3 feet, 75 cts.

Red Cedar, one of the best evergreens, 1½ to 2 feet, 25 cts; 3 to 4 feet, 50 cts.

Cupressus Pyramidalis, this is a beautiful, tall, columnar evergreen, does well in Texas, a little tender in far north. 1 to 2 feet, 25 cts; 2 to 3 feet, 50 cts.

Cupressus Horizontalis, like above, of rapid



growth, but branches spreading. 2 to 3 feet, 25 cts; 3 to 4 feet, 50 cts. each.

Roses.

Strong. Open ground.

One year, 25 cents; \$2.50 per 12. Two years, extra strong, 35 cents each; \$3 per 12.

These plants have been blooming profusely all the season, and their description carefully noted. No better list, including the same number of varieties, can be made. Such plants ordinarily sell at 50 cents each. They are not to be compared with the delicate and sickly pot plants, finger-length high, sent out by many propogating houses at cheap rates, the majority of which die in transplanting to open ground. I have the largest stock of field grown Roses in West Texas.

EVERBLOOMING.

Agrippina, rich, velvety crimson, a free bloomer and grand bedder.

American Beauty, dark, rich crimson, exquisite shade, large flowers.

Belle Siebrecht, a solid pink of the richest shade. The flowers are sweetly perfumed,

large and well formed. It is a free bloomer with large and glossy foliage. 35 cts.

Bougere, the coloring of this rose is simply exquisite. The base and back of the petals are a bright yellow, the center highly colored with glowing copper and rose.

Bridesmaid, pink, strong grower, handsome foliage, a favorite.

The Bride, strong, healthy, large, double, fine bud, white, with delicate carmine blush.

Camoens, China rose with yellow base of petals, sometimes striped with white; medium size, nearly full, sweet and free flowering.

Countess Anna Thun, a strong, bushy grower. The flowers are of extra size and beautiful form, color a rich orange salmon, shaded to silvery pink.

Champion of the World, a remarkable new sort

- which combines the most desirable qualities. It is a perpetual bloomer, summer and winter. The flowers, which are produced in the greatest profusion, are perfectly double and of perfect shape; they are of a deep, rosy pink and delightfully fragrant. 35 cts. each.
- Countess Riza du Parc**, China rose; base of petals coppery yellow, medium, full and globular, very sweet. One of the best.
- Catharina Mermet**, vigorous, large, full, bright flesh color, very sweet, center rosy flesh.
- Chlothilde Supert**, Polyantha Rose, pearl white, very double and sweet.
- Charles Darwin**, brownish crimson, shaded violet, fine in autumn. 35 cts.
- Douglass**, dark cherry red, rich velvety, large and full; one of the best bloomers.
- Duchess de Brabant**, few roses equal this in freedom of flowering; none surpass it in either fragrance or vigor; the flowers are rich and peculiarly colored; color rose, heavily shaded with amber and salmon.
- Dr. Grill**, a coppery yellow flower, with a fawn-rose reflex; an entirely new color, and one of great brilliance. The outer petals are large, round, shell-shaped, and enclose a mass of shorter petals of a brilliant color.
- Duchess of Albany**, very large, deep pink, full and highly perfumed.
- Ernest Metz**, a remarkably beautiful variety, and one of the best new French roses, of vigorous growth. Blooms very large and deliciously sweet, are produced singly on stiff stems. The color is tender rose, changing toward the center to vivid cherry, with a distinct border of cherry around each petal.
- Etoile de Lyon**, sulphur yellow, very large, full and fine form: one of the best.
- Franziska Krager**, color deep copper yellow: the flower, when open is of good size and very symmetrical. One of the finest roses to plant in masses and clumps.
- Gen. Jacqueminot**, crimson, large and full, strong grower, hardy, free bloomer.
- Hermosa**, clear rose, medium, full, hardy, free bloomer.
- Henry M. Stanley**, new, a rare shade of amber rose, delicately tinged with apricot-yellow towards the center. A beautiful rose. 35 cts.
- Kaiserina Augusta Victoria**, (Hy. Tea,) pure ivory white, fine buds and fine flowers. A splendid grower.
- La France**, strong, upright, very large, full, delicate pink, sweet, profuse.
- Louis Richard**, a coppery rose, beautifully tinted with lilac, free bloomer; one of the best. 35 cents each.
- Louis Philippe**, rich, dark velvety crimson, profuse bloomer, good form.
- Mad. Elie Lambert**, a rich, creamy white, tinted pale golden yellow, center rosy flesh, cup shaped. 50 cts.
- Mad. de Watteville**, a beautiful grand new Tea. The color is a rosy-blush, widely bordered with bright crimson, deepening towards the center to orange. A pretty rose.
- Mad. Hoste**, ivory white, deep amber center, extra fine.
- Mad. Lambard**, a first class rose for bedding; extra large full flowers; very double and sweet; color a beautiful shade of rosy bronze, passing to salmon and fawn, beautifully shaded with carmine; an elegant rose.
- Mad. Caroline Testout**, the petals are large, and of the elegant La France form, exquisitely edged and bordered with clear silver rose. Both flowers and buds are extra large and of very elegant form; the color is brilliant satiny rose, deepening at center to clear red. One of the best new roses.
- Mad. Isaac Periere**, very hardy and a constant bloomer; it has a large beautiful foliage and is a vigorous grower: the flowers are a beautiful, vivid carmine. One of the best.
- Mme. Pellissier**, a most beautiful yellow bedder; broad creamy outer petals, deepening to fine yellow in the center. Petals very large and well shaped.
- Malmaison**, this is certainly one of the choicest roses and for general cultivation unsurpassed. The color is a beautiful, rich, creamy flesh, with a rose center; flowers very large, perfectly double and deliciously fragrant; a strictly first class rose in every respect.
- Marion Dingee**, a grand, new rose; it is a strong vigorous grower, with thick, green leaves. The flowers are large and full, the color is of the darkest crimson, and the richest colored Tea rose: free bloomer. 35 cts.
- Marie Guillot**, moderate grower, white, large, very full, none finer.
- Meteor**, deepest crimson, large and double, a beautiful free bloomer.
- Mrs. Degraw**, the color is a rich, glossy pink, hardy; a premier rose in every respect.
- Papa Gontier**, tea rose, bright rosy carmine crimson, blooms are large and long, free bloomer.
- Perle des Jardins**, golden yellow, large, double, free bloomer; the finest yellow rose in cultivation.
- Pink Soupert**, new Polyantha rose. The flowers have the form of C. Soupert and in color of deep Hermosa pink. A very free bloomer: single plants under ordinary treatment, often produce fifty perfect flowers; hardy and good.
- Queen's Scarlet**, rich velvety red, most profuse in bloom, hardy.

Look at our list of Cannas and Gladioli. They are the best money can buy. 11.

Safrano, a bright, apricot yellow, changing to orange fawn. It is very much esteemed and a grand favorite.

Senator Mc Naughton, light yellow, fine buds and flowers, free bloomer, new.

Snow Ball, this is one of the finest pure white roses, flowers round, like a ball, very double, free bloomer; hardy and sweet.

Snow Flake, pure white; most profuse bloomer of all roses.

Souvenir de Wooten, a remarkably brilliant and striking new ever-blooming rose. The color is a beautiful shade of a carmine crimson, deliciously fragrant, a prolific bloomer, of vigorous growth. The flowers are very large and double.

Striped La France, same as La France, except the color pink, with stripes through it, superb.

Suzanne Blanchett, foliage large, erect and beautiful; outer petals large and broad, of a clear flesh color, inner petals shorter and of deeper shade.

Sunset, this exquisite orange yellow variety is one of the finest Tea Roses grown; the flowers are large and double.

The Queen, a most charming Tea Rose. It is pure snow-white, makes good, finely formed buds, is quite full. The petals are thick and of good substance, opens well, is very sweet, and valuable as a pure white everblooming rose.

Triumph de Pernet Pere, magenta red, passing to rich crimson. flowers large; a free bloomer. 35 cts. each.

Vick's Caprice, a beautiful striped rose, perfectly hardy, color bright rose, distinctly striped deep carmine or crimson.

Viscountess Folkestone, always scarce; a gem among roses; very large with very large petals, color white illuminated with shell pink. 35 cts. each.

Waban, identical with Catherina Mermet, only it is deeper and richer in color.

White La France, pure white, large flower, free bloomer, strong grower.

Rugosa Alba, this fine little rose is a native of Northern Texas. The foliage is finely cut and shining as if varnished; the growth is of dwarf habit. The flowers are single of a creamy white color changing to rose, sometimes to yellow. In fall and winter the bushes are full of cherry-red rose apples, so this plant will be an ornament all the year through. 15 cts; \$1.50 per 12; \$10 per 100.

CLIMBING ROSES.

Baltimore Belle, good climber, medium, full, in clusters, profuse in spring.

Climbing Hermosa, nearly every one is acquainted with the merits of this grand old rose.

The flowers are identical with Hermosa, from which it only differs in regards to its growth. The flowers are borne in great profusion, and in color are clear, bright pink, medium size, full and very fragrant. It is a rapid climber and an exceedingly vigorous grower. 35 cts.

Climbing Perle, yellow, large flowers, one of the best climbing roses, hardy.

Crimson Rambler, new, the plant is of vigorous growth, the color is of the brightest crimson. The flowers are produced in great pyramidal panicles or trusses, each carrying from 20 to 40 blooms; a charming pillar rose. 50 cts.

Empress of China, flowers of medium size, from painted buds, soft red, turning lighter as it opens. It is said to bloom from May till Dec. Introduced from China. 50 cts.

Glorie de Dijon, this grand southern rose is used as a pillar rose. It is noted for the great size of its flowers, its delicate Tea scent, and its exquisite shades of color, being a blending of amber, carmine and cream. One of the finest roses on our list. 50 cts.

Greenville or Seven Sisters, a climber of most rampant growth; immense clusters of flowers varying in color from crimson to blush white.

Golden Chain or Climbing Safrano, a beautiful pillar rose, being a strong climber, color orange yellow or deep saffran, good size, full and sweet.

Jas. Sprunt, deep crimson, large, free bloomer, a valuable rose.

Mary Washington, a hardy, perpetual blooming climber, producing large, double, snow white blossoms in great profusion from spring until frost. It is a sweet and most valuable sort. 35 cts.

Marshal Niel, beautiful deep yellow, very large, full, globular form, sweet, free bloomer; the finest climbing rose. Budded upon Manetti, 35 cents each.

Reine Marie Henriette, glowing crimson, large and full, well formed, a strong climber.

Reine Olga de Wuertenberg, this splendid rose should be grown where the Marshal Niel succeeds. For covering verandas and trellises it has no equal. Color rosy crimson, suffused with yellow. 35 cts.

W. Allen Richardson, the coloring of this rose is simply exquisite. The base and back of the petals are a bright yellow, the center highly colored with glowing copper and rose; first class climber. Try it. 35 cts.

Wichuriana, new, the growth is creeping and therefore can be used to cover the ground, stems of trees, pillars, trellises or any other purpose desired. They are the hardiest roses, will stand any climate, and will thrive in the

poorest soil. The foliage is finely cut, bright green, shining as if varnished and keeps in full beauty until Christmas. The flowers are single, pure white, with yellow stamens, and are produced in great profusion. 35 cts.

MOSS ROSES.

Crimson Globe.

Glory of Moses, clear pink, very mossy bud.

Mausseline, large, full, color pure white to rosy bluish; a continuous bloomer.

Zenobia, pink, large and double.

TREE ROSES.

The **TREE ROSES** are grafted on hardy rose stalks four to five feet high, are tree shaped, (see cut,) and when in full bloom are objects of beauty, making handsome plants for the lawn or rose border. In this shape we offer only the "Hybrid Perpetual" or hardy class. We have them in **WHITE, PINK, YELLOW** and **CRIMSON** at \$1.25 each; \$12.00 per dozen. Two colors to one stalk, **RED** and **WHITE,** \$1.50 each. The annexed cut represents a Tree Rose in full bloom.



Hardy Climbers.

ANTIGONUM LEPTOPHUS, or **QUEENS WREATH,** a splendid climbing plant from central Mexico, producing rose colored flowers in racines two feet long. The profusion of bloom is such as to give the resemblance of roses at a distance, hence its name, Rosa de Montana or Mountain Rose. Will live out in the winter anywhere in the south. The vines are killed by frost, but it quickly shoots up in the spring and develops its flowers from May until frost. This is one of the most lovely vines. 25 cts. each.

WISTERIA, a beautiful vigorous climber, that bears transplanting well. Produces large clusters of bluish purple, pea-shaped flowers. 25 cts each.

TRUMPET CREEPER, a climbing vine of rampant growth; clings to wood or stone walls, or trees: very hardy, produces clusters of long, trumpet-shaped, orange-scarlet flowers from early spring to late fall. 10 cts.

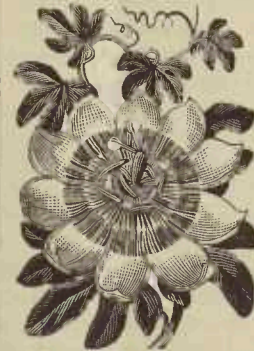
EVERGREEN HONEYSUCKLE, strong growing, a perfect evergreen and an abundant bloomer, very fragrant, flowers open white, changing to yellow. 20 cts.

JAPAN GOLDEN HONEYSUCKLE, a beautiful evergreen vine with a dark green foliage, netted and mottled with gold, flowers white and very desirable. The leaves change to dark green and purple in winter. 25 cts.

CHINESE MATRIMONY VINE, it is a most vigorous hardy climbing plant, when trained, in any

location where a hardy climber is desired. It sends out numerous side branches, so that it covers a great space in a short time, and every new vine is at once covered with bright purple flowers, which are succeeded by brilliant scarlet berries nearly an inch long. The contrast between the dark green foliage and shining scarlet fruit is beautiful. 25 cts each.

PASSIFLORA, the flowers are of a blue color, 3



to 4 inches across and borne profusely at all times after vines are 3 to 4 feet long. The numerous stamens are dark blue, with two or three rings of white near the base. It is difficult to imagine a more lovely flower. 15 cts. each.

Passiflora, same as above, white, 25 cts.

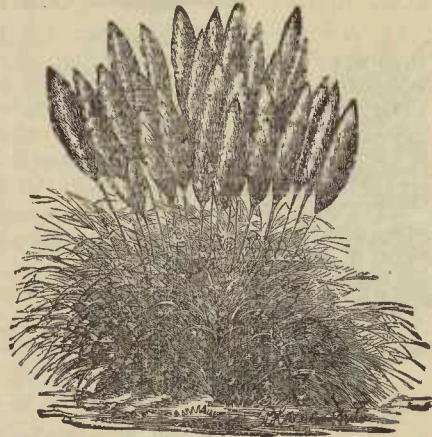
INDIAN CLIMBING VINE ROOT, something new, like an enormous sweet potato. It produces a vine which grows better in a room than outside, and the foliage not being dense, it makes a beautiful, novel and pleasing ornament for the parlor. Small yellow flowers and a fruit like a small tomato, with black stripes. Large root, 50 cts. each.

Ornamental Grasses.

These plants are very hardy, requiring little attention. They form very large clumps; their rich, green foliage, and beautiful, enormous plumes exciting great admiration. From the plumes handsome winter bouquets can be made for house decoration. We give the height to which they grow. By using dyes the plumes may be colored any shade. My plants are strong and well rooted.



Eulalia Japonica Zebrina. (Zebra Grass,) bright green blades with white bars across them. Grows to a height of five to six feet, producing fine lace-like plumes which will last for years if cut when fresh. Perfect hardy. 15 cts.



Gynierium Argenteum, (Pampas Grass,) enormous bunches of long, handsome, dark green blades, producing long stalks of silver-white plumes; 5 to 6 feet, 50 cts.

Eulalia Japonica Variegata. a variegated hardy grass from Japan. In appearance it somewhat resembles the Ribbon grass, while in a young state. It forms compact clumps, six feet in diameter; its flower stalks are very graceful and numerous. 25 cts.

Eulalia Univittata, very hardy and graceful, with elegant little plumes, 2 to 3 feet. 15 cts.

Aurea Linearis, foliage beautifully lined with gold; of compact and dwarf habit. 50 cts.

Gynierium Roseum, practically the same as above, but with rose colored plumes. 50 cts.

Gynierium Elegans, plumes silvery white, produced upon very long stems; blooms early; a graceful new variety. 50 cts.

Gy. Purpureum or Purple Colored, of very robust habit, producing plumes of great length and substance; of a light purple tint. 50 cts.

Gy. Roi des Roses, plumes very compact, of a delicate rose color; very fine blooming and compact growing, new variety. 50 cts.

Eriantus Ravenna, (Mock Pampas,) the plumes last outdoors for several months, and are borne profusely; 8 to 10 feet. 15 cts.

Lemon Grass, came from Malabar, where, as in many other parts of the world, the tea made from it is a favorite beverage. A delightful perfume is extracted from the leaves. Highly valued for its medicinal properties and sweet fragrance. Large clumps, 25 cts.

Texas Blue Grass, this is one of the hardiest and best winter grasses for our climate, it is also a good lawn grass. 1 large packet seed, 25 cts. 100 plants, 25 cts.

Cannas.



Dry, divided roots, the best to transplant, 20 cents each; \$2 per 12. One each of the 20 varieties for \$3.

This magnificent new race of Cannas is the sensation of the century in floral novelties, in size, brilliancy of flowers and majestic musa-like foliage; they commence to flower in a very short time after planting, and are a mass of gorgeous colors until stopped by frost in fall. At the low price that these showey plants are now offered, no one, who has a lawn or yard, should be without a bed of these beautiful free blooming Cannas.

The following 20 sorts are the best collection that can be made.

- | | |
|----------------------------|------------------------------------|
| Alphonse Bouvier, crimson. | Alsace, light yellow. |
| Charles Henderson, red. | Antoine Crozy, scarlet and yellow. |
| Egendale, cherry red. | Florence Vaughan, bright scarlet. |
| F. Newessel. | Golden Star, yellow. |
| Maurice Rivoire. | J. D. Cabos, rich apricot yellow. |

14. *Hohen Rabatt* geben wir für Anpflanzungen auf Kirchhöfen, Schulen, Kirchen etc.

Geoffrey St. Hillaire, scarlet and orange.

J. C. Vaughan, vermillion orange.

Maurice Mussy.

Mad. Crozy, crimson, bordered golden yellow.

Mad. Montefiore.

Nelly Bowden.

Paul Bruant, orange scarlet.

Princess Brancovan, red, edged golden brown.

Queen Charlotte, orange scarlet, edged yellow.

Souvenir d'Antoine Crozy, scarlet crimson, bordered with golden yellow.

Gladiolus.



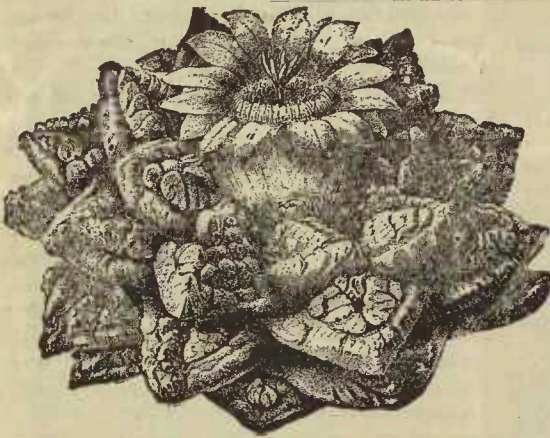
Bulbs, extra large, 1½ to 2 inches in diameter of the finest varieties that money can buy. 5 cents each; 50 cts. per 12; \$3 per 100.

The **GLADIOLUS** is the most satisfactory and most popular of all garden bulbs. Nothing else of the kind costs so little, and grows and blooms so readily in any soil or climate. It is the most satisfactory garden flower, thriving and blooming as it does, with least care and attention, and makes a display, which for brilliancy and beauty of coloring, few bulbs can equal. The Gladiolus is to the flower garden what bread is to men.

Plant at any time from March to June, in any fairly good soil, well spaded. Plant in full sun and keep down weeds. Try a hundred of my extra large and extra fine bulbs, and have the grandest flower you ever saw of all colors, **yellow, crimson, buff, salmon, lemon, pink, rose, white, cherry, maroon, scarlet,** and in fact all odd marked sorts that one can think of.

rose, white, cherry, maroon, scarlet, and in fact all odd marked sorts that one can think of.

Rare Cacti.



Anhalonium Fissurata, The Living Rock. The wonder of Wonders in the Plant Kingdom. Nature's Living Picture of Intricate Carved Stone Work. Will Live and Bloom for Years without being Planted or Watered. Called by the Indians "The Star Rock" and "Dry Whiskey" being somewhat noted as an intoxicant. This rare and marvelous plant is found on the top of arid, barren, rocky, limestone mountains, at great altitudes, in Mexico, where it is too hot and dry in the summer for other vegetation, and too cold in the winter for even animal life, it will live and thrive in all extremes of temperature, and does well in a northern climate where all the native plants perish from cold. It contains sufficient moisture and substance to furnish a bloom for years without being planted or watered, and will bloom in a

trunk or room, or wherever it may be. The flower is very beautiful, being one inch long and of the same diameter. Price 35 cts.

Anhalonium Williamsii, this Cacti should be in every collection; shape like a carrot, 2½ inches in diameter at the top, 6 to 8 inches in length, dark glaucous green, without any spines; the plant produces little offsets and grows into fine large clusters; flowers, pale rose. Single plants, 20 cts; clusters, 50 cts.

Cereus Greggii, a very rare Cereus, probably not a single specimen being in possession of any dealer in the United States. The roots resemble an enormous sweet potato; it will grow for months without watering; flowers white and open at night. Price, 75 cts. to \$2.

Echinocactus Brevihamatus, plants, 5 to 6 inches high, 4 to 6 inches in diameter, very dark green, with numerous flowers; spines brownish, less than an inch long, flowers abundant 1 to 1½ inches long, pale rose with a darker colored mid-rib on each petal. 35 cts. to \$1.

Echinocactus Horizontalonius, plants, 3 to 7 inches in diameter, globular in form when full grown, with 9 to 10 thick ridges, on which the clusters of spines are very closely set, the number usually being seven; the flowers are funnel-shaped, purplish pink, the sepals being tipped with a darker shade of purple. One of the finest Echinocactus in our collection, and one of the very best for general cultivation, quite distinct

by its beautiful gray color. Price for large plants, 50 cts. to \$1.50.

Echinocactus Intertextus, a neat small growing plant, seldom over 4 inches high. Spines nicely arranged and very regular, almost pure white; flowers long and wide; sepals dark purple with pale margins. 35 to 75 cts. each.

Echinocactus Longihamatus, globular, dark rich green, with large prominent ribs, usually 13, radial spines 1 to 4 inches in length, called fishhooks. The plant grows to a height of two feet, but flowers when only 2 inches high, flowers measuring $2\frac{1}{2}$ to $3\frac{1}{2}$ inches; externally greenish-yellow and red; internally, yellow with a red base. It is our choice. 50 cts. to \$2

Echinocactus Texensis, "Devils Pin Cushion" globular when young, when old, depressed, about 12 inches in diameter, and from 4 to 5 inches high. A very attractive plant with its rosy red spines; flowers, very large, yellowish rose and beautifully fringed; followed by large seed-pods, that are extremely ornamental, and which remain for several months in a bright red color. 35 cts. to \$1, according to size.

Echinocereus Enneacanthus, stems branching, often growing in dense clusters of a hundred flowers or more; fresh green, spines few, ashy gray; large reddish purple flowers, fragrant, 3 inches in diameter. This is a most attractive plant and a free bloomer. Single heads, 20 to 50 cents.

Echinocereus Paucispinus, stems 5 to 9 inches high, 2 to 4 inches in diameter; ribs few; grooves shallow; spines few, and very fine dark colored flowers. 35 cts. to \$1.

Echinocereus Stramineus, a most remarkable plant, one plant often consisting of from 100 to 200 heads, which are covered and defended by the very long, flexous, straw colored spines. Single heads, 5 to 9 inches high, 2 to 3 inches in diameter; petals of a bright purple or deep pink color, inclining to crimson. Fruit purple, of a delicious taste, intermediate between a strawberry and gooseberry. 50 cts. to \$1.

Mamillaria Applanata, few Mamillarias will make such a fine show as this one in early spring, when covered with from 20 to 40 bright red berries, which appear between each tubercle. It flowers also at about the same time, making it doubly attractive. The plant is globose, depressed in the center, 3 to 5 inches in diameter and as symmetrical in shape as a rosette, tubercles quadrangular, white spines, short and rigid. 20 to 50 cts.

Mamillaria Echinus, a very striking plant. Radial spines white, interlacing. Flowers yel-

low, exceedingly large and attractive. Plant globular, $1\frac{1}{2}$ to 2 inches in diameter; very desirable. 25 to 50 cts. each.

Mamillaria Micromeris, this is called the "Button Cactus;" the beautiful little plant being completely covered with a delicate lace-work of ashey gray spines. It is the smallest known species of Cacti; fully grown plants only measuring from $\frac{1}{2}$ to 1 inch in diameter and $\frac{1}{2}$ to 2 inches in height. Flowers, whitish or very light pink, followed by bright earlike berries, which remain on it all winter and make it very attractive. 15 to 35 cts.

Mamillaria Pectinata, a small, beautiful, globe-shaped plant, with small, white, rigid spines; bears larger flowers than the plant, yellow, with exterior sepals reddish green, interior ones yellow, with a dark mid-rib. Petals of a beautiful sulphur yellow; a neat plant and a low price. 25 to 50 cts. each.

Mamillaria Pusilla, this beautiful little Cactus is always admired for its bright silvery spines, which radiate in the sun. It forms fine clusters in comparatively short time, and consequently can be readily propagated; flowers yellowish white, with a red stripe through center of petal, and produced in profusion, followed by scarlet, club-shaped berries which remain on the plant until next season. 15 to 25 cents each.

Mamillaria Tuberosa, a pretty and well defined species from the mountains. Stems grow in clusters, 2 to 3 inches high. Flowers pale purple and about 1 inch in diameter; berry oval elongated, red and odd sort. Single plant, 25 to 50 cts. each.

Dasyliirion Serrulata, rarely, if ever does any plant attract as much attention as this. It is always a beautiful evergreen. It stands great extremities of heat and cold, and a years drouth as it does in its native country. The delicate serrulated leaves, varying from 100 to 200 in number, are 2 to 3 feet long and $\frac{1}{2}$ inch wide. The enormous flower spikes rise to 10 to 12 feet in height. This is acknowledged as the most durable and useful of all decoration plants. 75 cents to \$1.50 each.

Agave Lecheguilla, a plant of many stems; bright green on the outside and pale green on the inside. It is the "Ixle Plant" from the fiber of which the Mexicans make ropes, bags and baskets. 20 cts.

We can supply any known Cacti at a much cheaper price than Dealers will charge you. Send me the name of the Cacti wanted.

Send your orders direct to the Nursery and you will get much better trees and plants, and save $\frac{1}{3}$ to $\frac{1}{2}$ of your money. My stock is much larger and plants are in a better condition, than they were last year.

“The Rolling Thing Before the Whirlwind,”
The RESURRECTION PLANT,
Mentioned by Isaiah in the Bible.



This Shrunken, Rounded Ball of Tightly-Coiled-Up Leaflets, Dry and apparently Dead, will live for hundreds of years without being planted or watered. When IMMERSED in tepid water one frond-like tip unfolds slowly outward, then another, and another, until in a short time the whole plant has resurrected, flattened out into a plate-like shape, and is transformed into a Lovely Rosette of beautiful velvet green, fern-like moss, both odd and marvelous.

It will grow nicely if planted in a warm, moist, shady place, but being nearly or fully matured in size and growth when gathered, it need not be planted at all, as the plant will keep just as well in a trunk, or any other dry place in the house, for ages, in a perfectly fresh and healthy condition, and can be resurrected at will time and again, indefinitely, by being allowed to curl up and become dry, each time, after having been fully opened out by water.

The first picture is a photograph of the apparently dead plant (reduced in size), the inside fronds of which are rolled up like a scroll; the color is somewhat like that of iron rust, having a much more dead appearance than old dry hay, and like hay, it is not affected in the least by any extreme of cold or heat.



The most remarkable peculiarity of this plant is, that after being BOILED, it is still so sensitive to humidity that it will curl up and unfold in the same manner as when growing in its native soil.

It is entirely distinct from a small “Selaginella” grown in Mexico, incorrectly called the “Resurrection Plant.”

It is one of the greatest of wonders in the plant kingdom; a rare and beautiful thing in the parlor in the dead of Winter, and a most interesting curiosity to all at all times. 15 cents each; 2 for 25 cents.

I also have a Resurrection Moss, 25 cents each; and three kinds of Resurrection Ferns, 15 cents each; which, when dry, curl up and are apparently dead like the Resurrection Plant, and like it, can be resurrected at will, indefinitely.

Bitte folgendes genau durchzulesen.

Besondere Aufmerksamkeit wird Aufträgen von deutschen Kunden geschenkt.

Alle meine Bäume sind ohne Bewässerung gezogen und besonders für unser trockenes, heißes Klima geeignet. Ich bezahle keine Transport-Kosten, lege aber immer so viel gratis bei um die Kosten zu decken.

Der volle Betrag muß bei jeder Bestellung beiliegen. Es werden keine Sachen C. O. D. versandt. Bestellungen unter \$2 werden nicht angenommen, außer es werden 25 Cents für Verpackungs-Kosten mitgesandt.

Gelder sollten immer per Money Order oder registrierten Briefen gesandt werden. Bei kleinen Summen werden auch 2 Cents 4 pfennigen angenommen.

Nach diesem Katalog-Preisen werden die Bäume und Pflanzen sorgfältig in Moos und Stroh verpackt und an hiesige Transport-Gesellschaft abgeliefert, doch nachdem die Sachen aus meinen Händen gegangen sind, hört meine Verantwortlichkeit auf, außer wenn durch mich Irrthümer gemacht wurden, was aber innerhalb 5 Tagen nach Empfang der Sachen berichtet werden muß.

Man sei ja recht vorsichtig beim Auspacken der Bäume und schlage die Wurzeln sogleich in feuchter Erde ein; erlaube ja nicht daß die Wurzeln austrocknen können.

Es ist immer besser Bäume bei Express kommen zu lassen, außer sie sind schwer und die Entfernung ist nicht weit, dann können sie auch bei Fracht gesandt werden.

Wenn Geld genug mitgesandt wird, so werde ich die Express-Kosten bezahlen, da ich billigere Raten bekomme, so kann ich meinen Kunden dadurch Geld ersparen, doch kann keiner verlangen daß ich die Kosten aus meiner Tasche bezahle. Sollte zu viel Geld gesandt werden, so wird das übrige sogleich returnirt.

Man vergesse nicht die genaue Adresse anzugeben, und auch wohin die Sachen gesandt werden sollen, dieses vermeidet manchen Irrthum.

Es ist mein eigenes Interesse meinen Kunden nur gute, namensächte Sachen zu senden und nur solche Bäume und Pflanzen mit welchen sie Erfolg haben werden; aber ich kann nicht verantwortlich gemacht werden für zu große Dürre, strenge Winter, frühe oder späte Fröste, oder für Hasen und Insecten Schaden und bin nicht verantwortlich für Bäume und Pflanzen, welche in anderen Händen absterben.

Ich engagire keine reisende Baumagenten. Auch habe ich keine Obstbäume welche \$1.50 bis \$2.50 per Stück kosten und sich später als Humbug ausweisen, noch habe ich **Baum-**Weintrauben, Brombeeren, Himbeeren oder Erdbeeren, auch keinen nie fehlschlagenden Mandel oder anderen Obstbaum. Diese Wunder Bäume und Pflanzen überlasse ich gerne den jungengewandten Baumagenten, für welche sie passend sind.

Achtung.

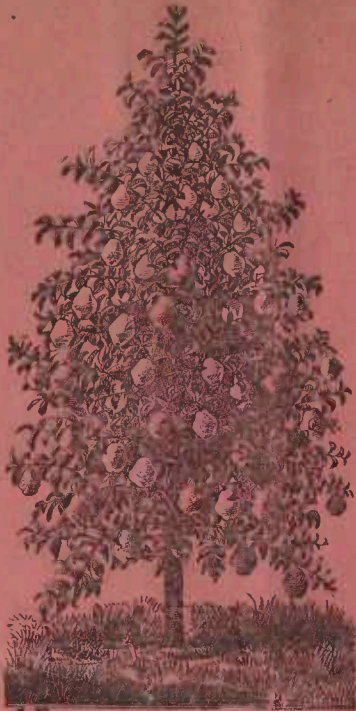
Alle diejenigen, welche große Anpflanzungen zu machen gedenken und Bäume, Pflanzen oder Rosen in großen Quantitäten gebrauchen, sollten um meine Engros-Preise schreiben, da ich Bäume in großen Quantitäten billiger Fracht frei nach irgend einer Station in Texas liefern kann, als irgend eine andere Baumschule.

Für größere Anpflanzungen für Kirchen, Schulen oder Kirchhöfe, gebe ich einen großen Rabatt, da ich für diese Zwecke einen großen Vorrath an Bäumen, Rosen und immergrünen Sträuchern habe.

Sollten irgend welche Sorten Bäume, Pflanzen oder Samen gewünscht werden, die nicht im Katalog benannt sind, so bin ich gerne bereit, selbige zu den niedrigsten Preisen zu besorgen. Da ich mit den größten Baumschulen, Floristen und Saamenhändlern in Verbindung stehe, kann ich die Sachen zu speziellen Preisen bekommen.

Man adressire alle Briefe an

**Otto Lorke,
Neu Braunsfels, Texas.**



1 BUSHEL FROM A 4 YEARS OLD KIEFFER PEAR TREE.



Gegründet 1869.

:: Zeitschrift für ::

Landwirthschaft, Viehzucht, Obstbau, Blumen- und Bienenzucht und den Familienkreis.

Die beste deutsche landwirthschaftliche Zeitung America's.

Pro Jahr \$1.00.

Erscheint wöchentlich.

Pro Jahr \$1.00.

Probenummern werden bereitwilligst versandt. — Jeder Leser erhält eine werthvolle Prämie

Man adressire: **Herald Company,**
Milwaukee, Wis.